

Thinkwell's Homeschool Math Series Placement Guide

Welcome! Thank you for your interest in Thinkwell. We know the curriculum selection process for your homeschool student can be challenging. We here at Thinkwell want to help you make this decision as straightforward and painless as possible. This Guide and the Placement Tests were created to provide you with a tool to place your student in the appropriate level of math.

Thinkwell offers five courses in the Homeschool Math series.

- Thinkwell's Homeschool Prealgebra
- Thinkwell's Homeschool Intermediate Algebra (Algebra 1)
- Thinkwell's Homeschool Geometry coming soon!*
- Thinkwell's Homeschool College Algebra (Algebra 2)
- Thinkwell's Homeschool Precalculus
- Thinkwell's Homeschool Calculus

Typical Sequence of Secondary Math Courses

A typical sequence of secondary math courses completed by a college-bound student is listed below for your use in determining the most appropriate Thinkwell Homeschool course to take. Most college-bound students will take five or six years of math between 7th and 12th grades, beginning with Prealgebra and ending with Precalculus or Calculus.

- Prealgebra
- Algebra 1
- Geometry
- Algebra 2
- Precalculus
- Calculus

Guide to the Placement Tests

If you are not sure which Thinkwell Homeschool math course is best for your student, completing one or more of the Placement Tests will give you a better idea. Each Placement Test contains 10 questions. There is no time limit for the Placement Tests, but generally a test should take about an hour. Your student should take the test independently and a calculator should not be used.

After completing a Placement Test, you can use the **Guidelines for Interpreting Placement Test Scores** below to determine which course is recommended by Thinkwell. The Placement Test score and corresponding course recommendation should not be the only determining factor when deciding the appropriate course for your student. Your student's grade level and experience in previously completed math courses should also be considered. Please feel free to contact a Thinkwell representative at support@thinkwell.com or 1.800.684.0058 if you have any questions regarding appropriate placement.

Guidelines for Interpreting Placement Test Scores

Placement Test	Number of Correct Answers	Recommendation
Placement Test 1	5 or more	Thinkwell's Prealgebra
Placement Test 2	6 or less	Thinkwell's Prealgebra
	7 or more	Thinkwell's Intermediate Algebra (Algebra 1)
Placement Test 3	4 or less	<i>complete Placement Test 2</i>
	5 or 6	Thinkwell's Intermediate Algebra (Algebra 1)
	7 or more	Thinkwell's College Algebra (Algebra 2)
Placement Test 4	4 or less	<i>complete Placement Test 3</i>
	5 or 6	Thinkwell's College Algebra (Algebra 2)
	7 or more	Thinkwell's Precalculus
Placement Test 5	4 or less	<i>complete Placement Test 4</i>
	5 or 6	Thinkwell's Precalculus
	7 or more	Thinkwell's Calculus

Thinkwell's Placement Test 3

Thinkwell's Placement Test 3 is a 10-question test. Complete each question independently and show all work. Do not use a calculator. The test is not timed, but you should finish in less than 1.5 hours. Use the answer key to score your test after you finish all of the test questions. A recommendation can be made regarding your readiness for Thinkwell's College Algebra (Algebra 2) based on your score on this test.

1. Solve. $|6x + 4| = 3$

2. Find the product. $(x - 2)(x^2 - 4x + 1 + x)$

3. Divide. $\frac{2s^2 - s - 3}{s - 3}$

Assume that all variables result in nonzero denominators.

4. Subtract. $\frac{5}{x + 1} - \frac{6}{x^2 - 1}$

Assume that all variables result in nonzero denominators.

5. Solve for x . $\sqrt{4x - 3} = x - 6$

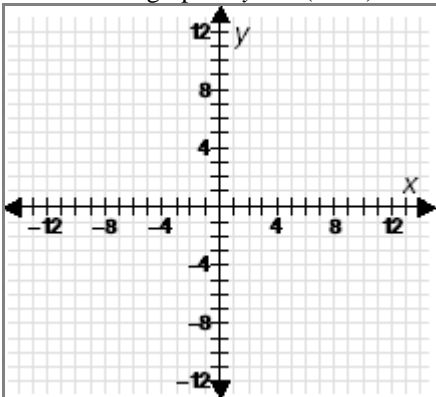
6. Write the equation of a line in slope-intercept form that passes through $(-6, -1)$ and $(-8, 7)$.

7. Write the slope-intercept form of the line that passes through $(4, -2)$ and is perpendicular to the line $y = \frac{4}{3}x - 1$.

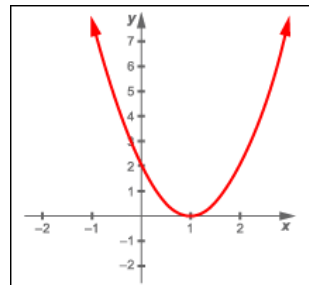
8. Solve the system by substitution.

$$\begin{cases} x + 4y = 16 \\ x = 19 - 5y \end{cases}$$

9. Sketch the graph of $y = -(x + 3)^2 - 1$.



10. Given the graph below, which of the following statements is true regarding the equation of the parabola?



- A. The discriminant is positive.
- B. The constant is zero.
- C. The coefficient of x^2 is negative.
- D. The discriminant is negative.
- E. None of the above